

Insights-driven innovation planning and management





Contents

Is IT complexity hindering business growth?	3
Does digital mean more IT?.....	3
5 top reasons for IT portfolio management	4
Make portfolio management manageable	5
Dream IT. Achieve IT	6
What customers say	7
Fire up innovation with Alfabet	8

Is IT complexity hindering business growth?

The digital age is fast becoming the digit-all age with the unrelenting business demand to deliver digital products faster than ever. It's all about outpacing "the other guy" with innovations that win and retain customers.

The technology's there. The know-how is there. What's the holdup? It could be an IT portfolio that's grown unwieldy, costly and difficult to manage.

Don't let IT complexity slow down digital business innovation.

Get moving on innovation.
See how with Alfabet.

Does digital mean more IT? No, just smarter IT.

Delivering for digital demands means your IT organization needs agility: fast answers to digital business challenges and informed decisions on the road forward.

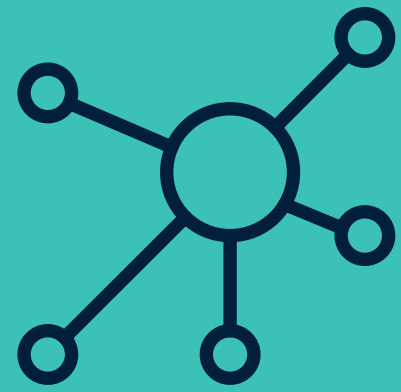
That takes smart IT portfolio management to:

- Keep your IT portfolio clutter-free
- Give clarity on the impact of change
- Balance cost between operations and innovation
- Assure risk is under control
- Create a business-focused IT roadmap

Make your IT portfolio work smarter for your business.

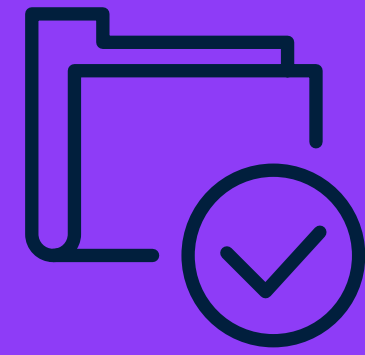
5 top reasons for IT portfolio management

1



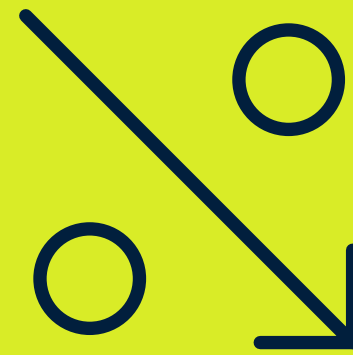
Capture business strategy and decide what it requires from IT

2



Ensure adequate governance of IT acquisition processes and follow-through on change decisions

3



Reduce the size and complexity of the IT landscape and cut unnecessary costs

4



Create operational efficiencies by eliminating information silos

5



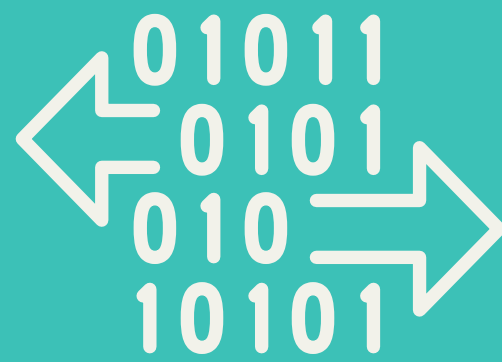
Get IT and business working together

Transform your portfolio—and your business. See how with Alfabet.

Make portfolio management manageable

Building an IT portfolio management practice can be daunting. It means bringing together many different IT aspects to identify cross-portfolio conflicts and synergies. It requires a well-populated repository to paint the complete picture.

Modern, market-leading portfolio management software like Alfabet gets you up and running fast:



**Preconfigured “Accelerator”
packages jumpstart your
practice**



**Using software as a service
keeps installation and
maintenance effort
off your back**



**Integration with other
IT management solutions
automates data capture**

Get your IT portfolio management practice up and running quickly.
See how with Alfabet.

Dream IT. Achieve IT.

Alfabet has the richest meta model in the industry and broad, easy-to-use configuration options so you can master:

IT portfolio rationalization

Strategy alignment

Portfolio transformation

IT planning

Agile innovation

API planning & management

Project execution

Plan and manage your dream IT portfolio.
See how with Alfabet.



What customers say

Software AG's Alfabet is recognized as a market-leading IT portfolio management tool by industry analysts. Here's what enterprise architects, IT strategists and portfolio managers at leading companies tell us:

“ One of the best tools I have used.

“ Powerful tool that provides a lot of business value.

“ Gives us better visibility ... in a way that we couldn't do before with spreadsheets and SharePoint® pages.

The best-run IT portfolios run on Alfabet.

See how Alfabet can drive growth and innovation for your business.

“ Highly configurable, performs well and offers a lot out of the box.

“ Our road maps are now transparent and available to everyone within our firm.

Fire up innovation with Alfabet

Run IT like a business—evaluate your IT assets, returns and risks to make smart investment, divestment and hold decisions.

See the whole picture—with “whole-view management”, you’ll know interdependencies between applications, technologies, projects, services and APIs.

Set the pace for change—increase IT’s agility to power business innovation, address new markets and determine how fast systems need to change.

Visit us at: www.SoftwareAG.com/alfabet

ABOUT SOFTWARE AG

Software AG simplifies the connected world. Founded in 1969, it helps deliver the experiences that employees, partners and customers now expect. Its technology creates the digital backbone that integrates applications, devices, data and clouds; empowers streamlined processes; and connects “things” like sensors, devices and machines. It helps 10,000+ organizations to become a truly connected enterprise and make smarter decisions, faster. The company has more than 5,000 employees across more than 70 countries and annual revenue of over €830 million.

Learn more at www.SoftwareAG.com. Follow us on [LinkedIn](#) and [Twitter](#).

© 2022 Software AG. All rights reserved. Software AG and all Software AG products are either trademarks or registered trademarks of Software AG. Other product and company names mentioned herein may be the trademarks of their respective owners.

